

**Aga Khan
Documentation
Center**



ARCHNET 3.0

**Redeveloping a platform for greater accessibility and
compatibility**

Michael A. Toler, Ph.D.
Archnet Content Manager, AKDC@MIT

**May 19, 2021
MELCom International Online Conference**

A Brief History of ARCHNET

1979 Establishment of the Aga Khan Program for Islamic Architecture at MIT and Harvard (AKPIA)


- Established through a gift provided by His Highness the Aga Khan to each institution.
- Documentation Centers created at Harvard and MIT to develop specialized library collections and to disseminate information about the history of Islamic architecture and contemporary design in the Islamic world
 - Publications, conferences, seminars, research travel grants, etc.
 - At MIT grantees had to provide copies of images to the Documentation Center
 - Aga Khan Visual Archive – Currently available on MIT DOME, with selections on Archnet


MIT Libraries | Dome


Dome Home » Visual Collections » Aga Khan Visual Archive » Recent submissions


Aga Khan Visual Archive: Recent submissions


Now showing items 1-20 of 33105

- 

Khan al-Khalili
Unknown (1382)
- 

Madrasa-i Ghiyathiyya
Qaram al-Dīn ibn Zayn al-Dīn Shirāzī (1433-1444)
- 

Tomb of Sitta Zubayda
Unknown (1189-1202)
- 

City of Cairo
Unknown (641-)
- 

City of Cairo
Unknown (641-)

Search

Search Dome
 This Collection

BROWSE

- All of Dome
- Communities & Collections
- By Issue Date
- Creators
- Titles
- Subjects
- This Collection
- By Issue Date
- Creators
- Titles
- Subjects

MY ACCOUNT

- Login
- Register

<https://dome.mit.edu/handle/1721.3/45936>



W E L C O M E T O

ARCHNET

ArchNet is an online community for architects, planners, urban designers, landscape architects, and scholars, with a special focus on the Islamic world.

ENTER

1998 HH Aga Khan Expresses expresses a desire for the work of AKPIA to have a greater impact in Muslim societies, both in academia and in practice.

- SA+P Dean Bill Mitchell proposes to build an online tool that responds to those concerns.

1999 Work begins on ArchNet

2001 Beta Launch

2003 ArchNet made publicly accessible

- Virtual Community & Digital Library

ArchNet is an online community for architects, planners, urban designers, interior designers, landscape architects, and scholars, with a special focus on the Islamic world. [More...](#)



New to ArchNet? [Register here.](#)

If you are an ArchNet member please log in.

Email

Password

[Forgot your password?](#)

Images 22'308 **Publications 1'946** **Members 11'810**

[Contribute a news item](#) [View ArchNet brochure](#)

■ The Courtyard House



The courtyard Arab house may be considered as a prototype diffused in many variations throughout the Islamic world. The "courtyard house" or "patio house" is a typology in which all living areas are distributed around the courtyard. The courtyard house creates a complex regulating system that creates a microclimate, which historically worked, and still works, in a passive way; heat transfer processes are all natural, without mechanical

devices powered by non-renewable energy. In this sense, the courtyard house is the end-product of a sophisticated historical process of unconscious climatic design. (Source: Scudo, Gianni. Climatic Design in the Arab Courtyard House)

See the [Digital Library Gallery](#) for projects and publications on the courtyard house.

■ Innovative Homes Sought for UK TV Series



A new UK television series, *Grand Designs Abroad*, is requesting information about homes being built for British people across Europe and Morocco.

One of Channel 4's most successful series, the current programme regularly attracts 5 million viewers in the UK. Each film follows a new build, major conversion or renovation with a unique approach to creating a

ArchNet serves the same ends as the AKPIA Program, the Documentation Centers, the Award for Architecture, and the Historic Cities Programme:

- To facilitate the advanced study of Islamic architectural history in all its diversity
- To encourage and enable the application of best practices in contemporary design and construction
- Dissemination of knowledge and resources to encourage excellence in scholarship, teaching, and professional practice

Archnet leverages the power of the WWW to do those things more effectively and on a broader scale.

One component of the site, ArchNet's Digital Library, could literally be a library for communities unable to develop their own collections

ARCHNET.ORG (v. 2.0) went live in January 2013

ARCHNET

Search Timeline Collections Resources Pedagogy

BUILT ENVIRONMENT OF MUSLIM SOCIETIES
ARCHNET
Across time and space, in all its variety!

Start Research Here

Search

Help | About Archnet | Terms of use | How to contribute | Facebook | Twitter | Archive | Contact

- A collaboration between the Aga Khan Trust for Culture and the Aga Khan Documentation Center at MIT (AKDC@MIT)
- Brings the technologies that power the ARCHNET up to date.
- AKDC@MIT becomes responsible for the curation/intellectual oversight, both in terms of subject matter and metadata standards.

ARCHNET Search Timeline Collections Resources Pedagogy

100 of 108 with 108 for Sites results Load View Grid List Map Slideshow Print

Type here to search everywhere

AND OR

Style/Period includes Ottoman Building type includes religious

ARCHNET Search Timeline Collections Resources Pedagogy

Search

100 of 108 with 108 for Sites results Load View Grid List Map Slideshow Print

Select all Unselect all All Sites Publications/Files Video and Audio Images

Algeria

Egypt

Filters

Geo Filter

Time Period

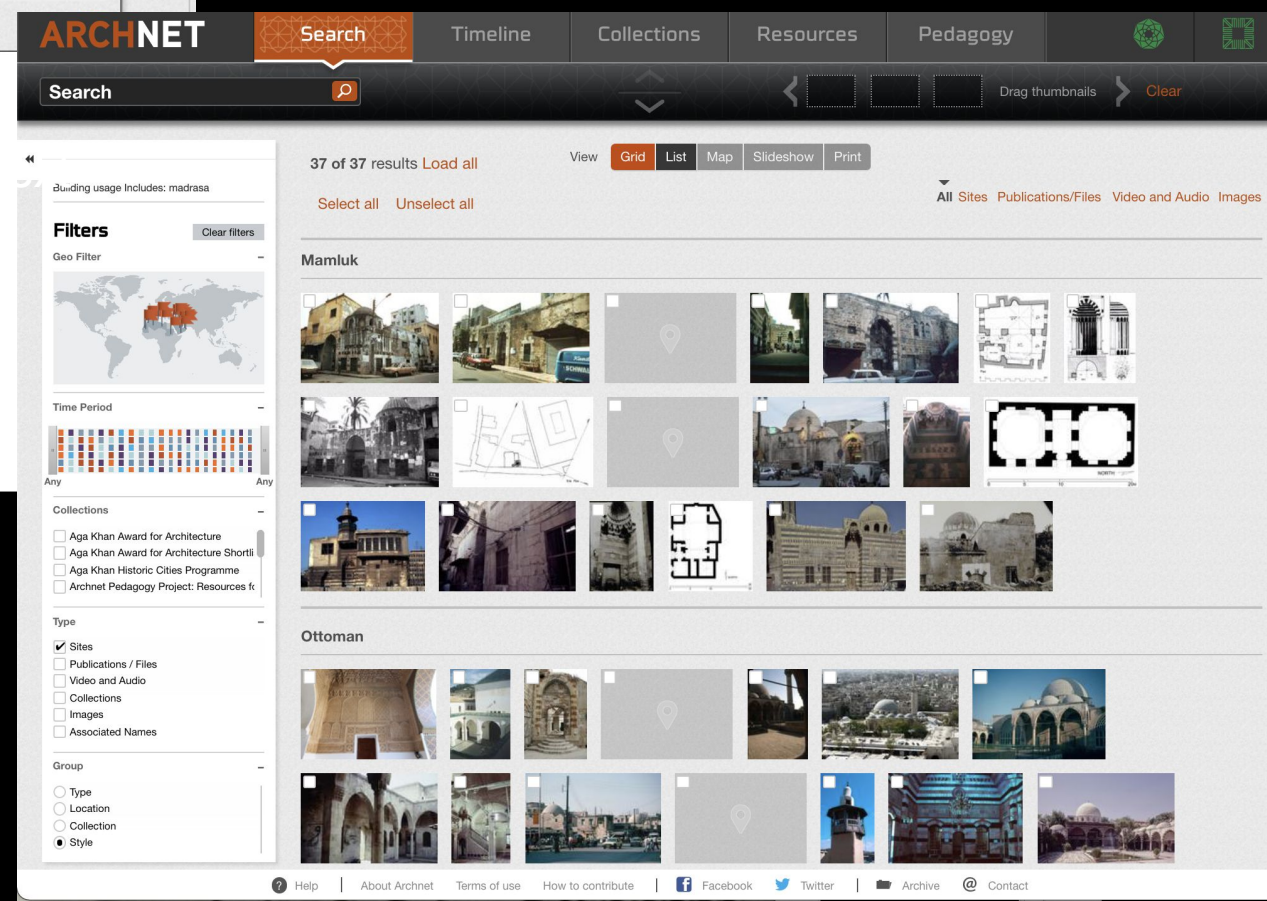
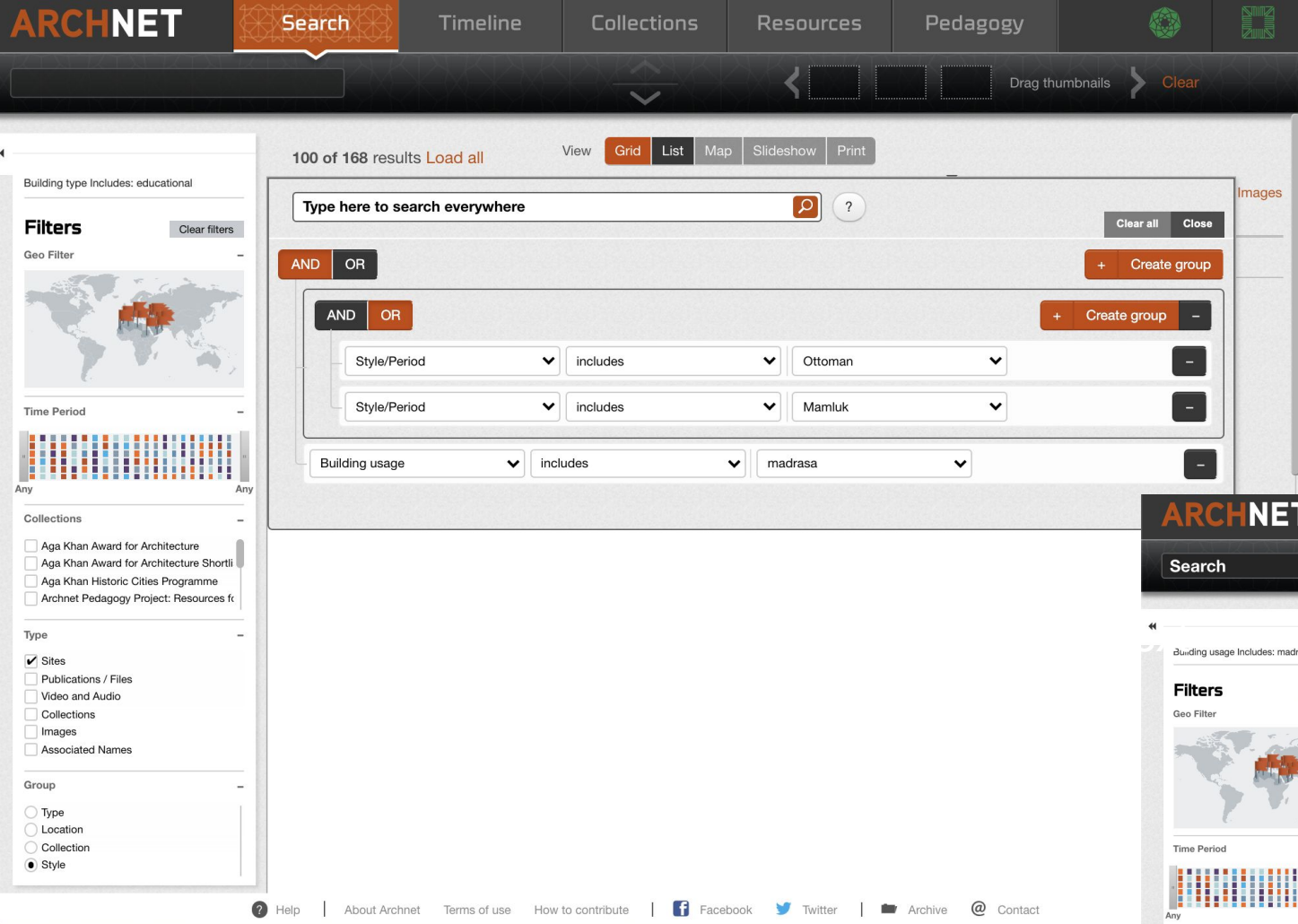
Collections

Type

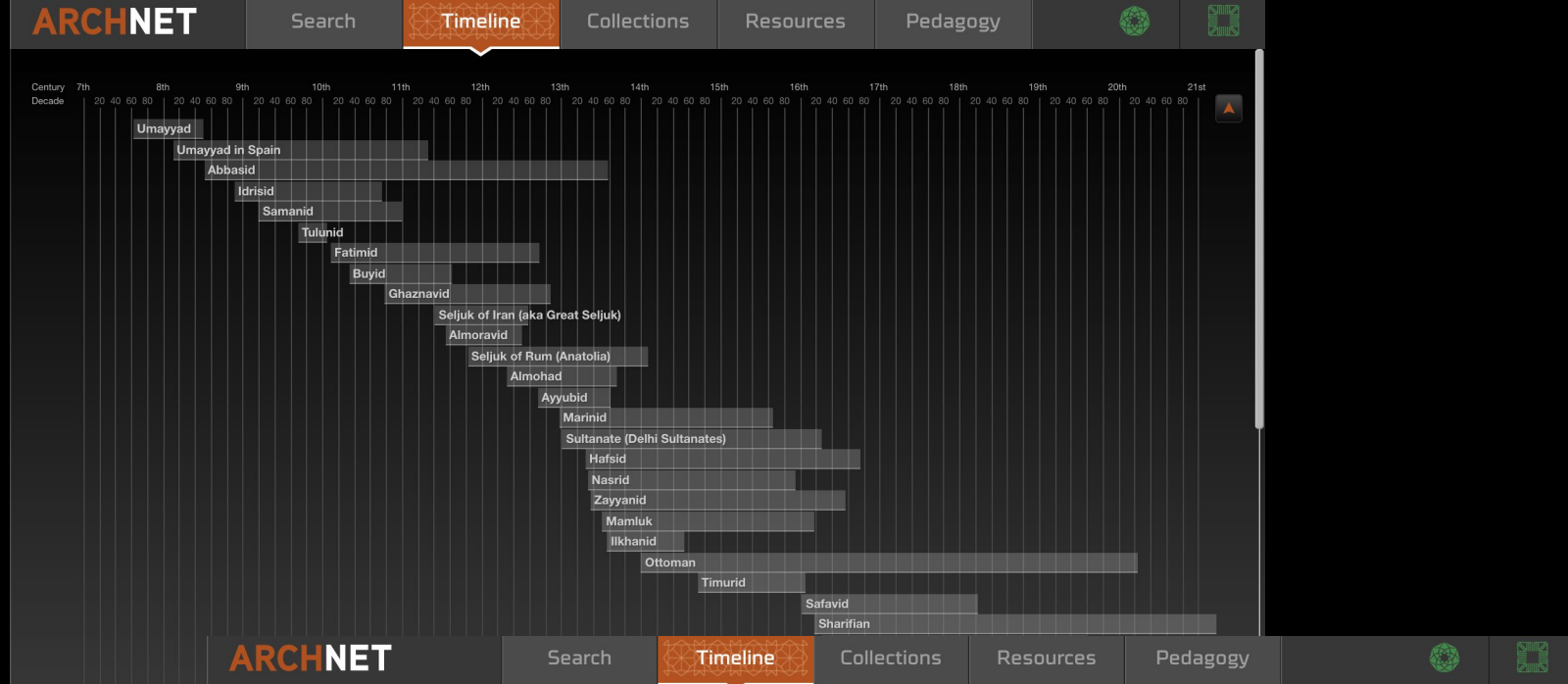
Group

Help | About Archnet | Terms of use | How to contribute | Facebook | Twitter | Archive | Contact

- Brings the technologies that power the ARCHNET up to date.
- AKDC@MIT becomes responsible for the curation/intellectual oversight, both in terms of subject matter and metadata standards.
- **All components beyond the digital library are removed.**
- **Replaces hyperlinked click through structure with a more powerful, precise search.**

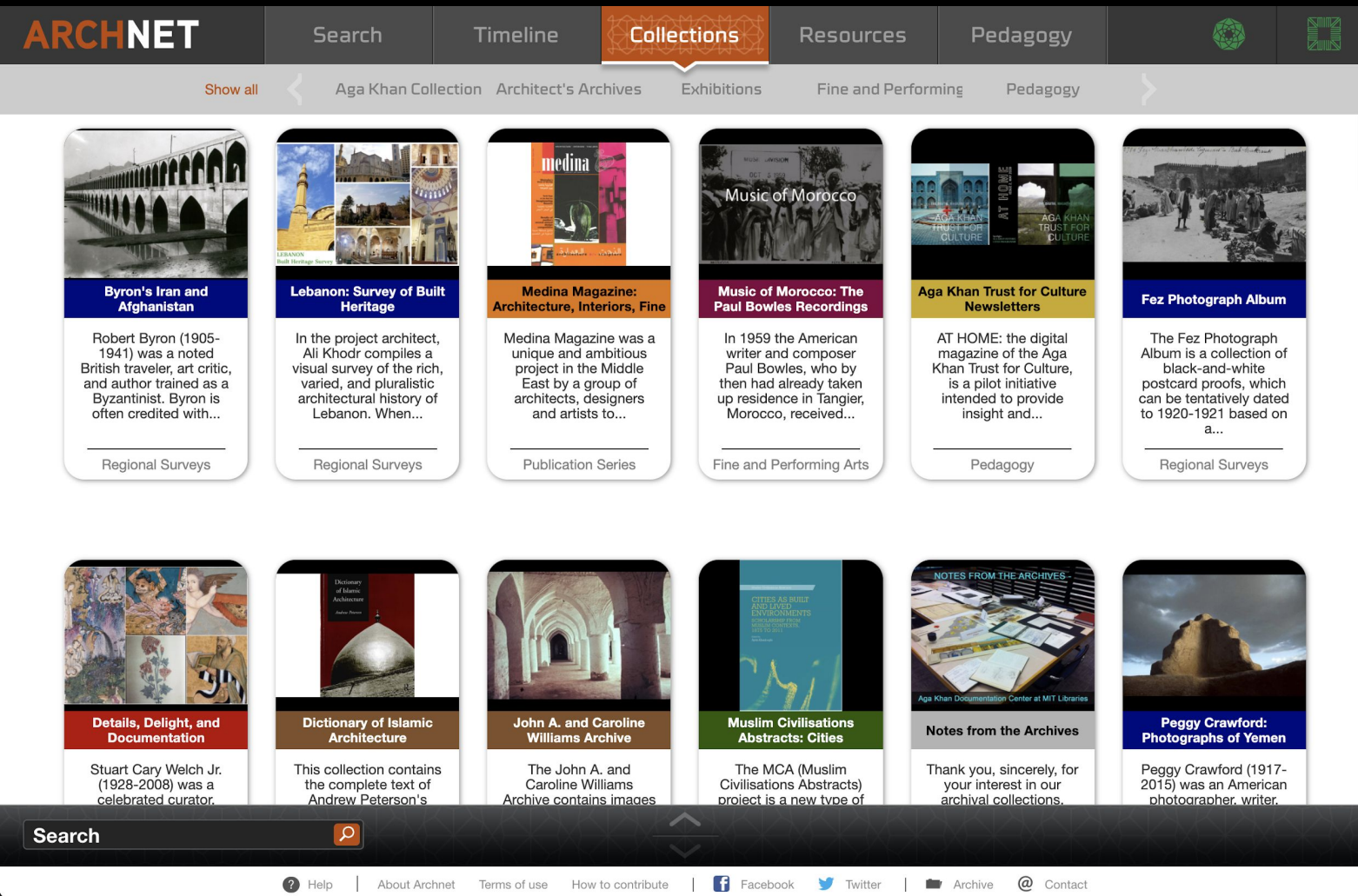


Full disclosure: Egypt and Turkey were removed from the search so I could fit both periods in the results screenshot



- Brings the technologies that power the ARCHNET up to date.
- AKDC@MIT becomes responsible for the curation/intellectual oversight, both in terms of subject matter and metadata standards.

- All components beyond the digital library are removed.
- Replaces hyperlinked click through structure with a search.
- **Introduces new visual learning components.**



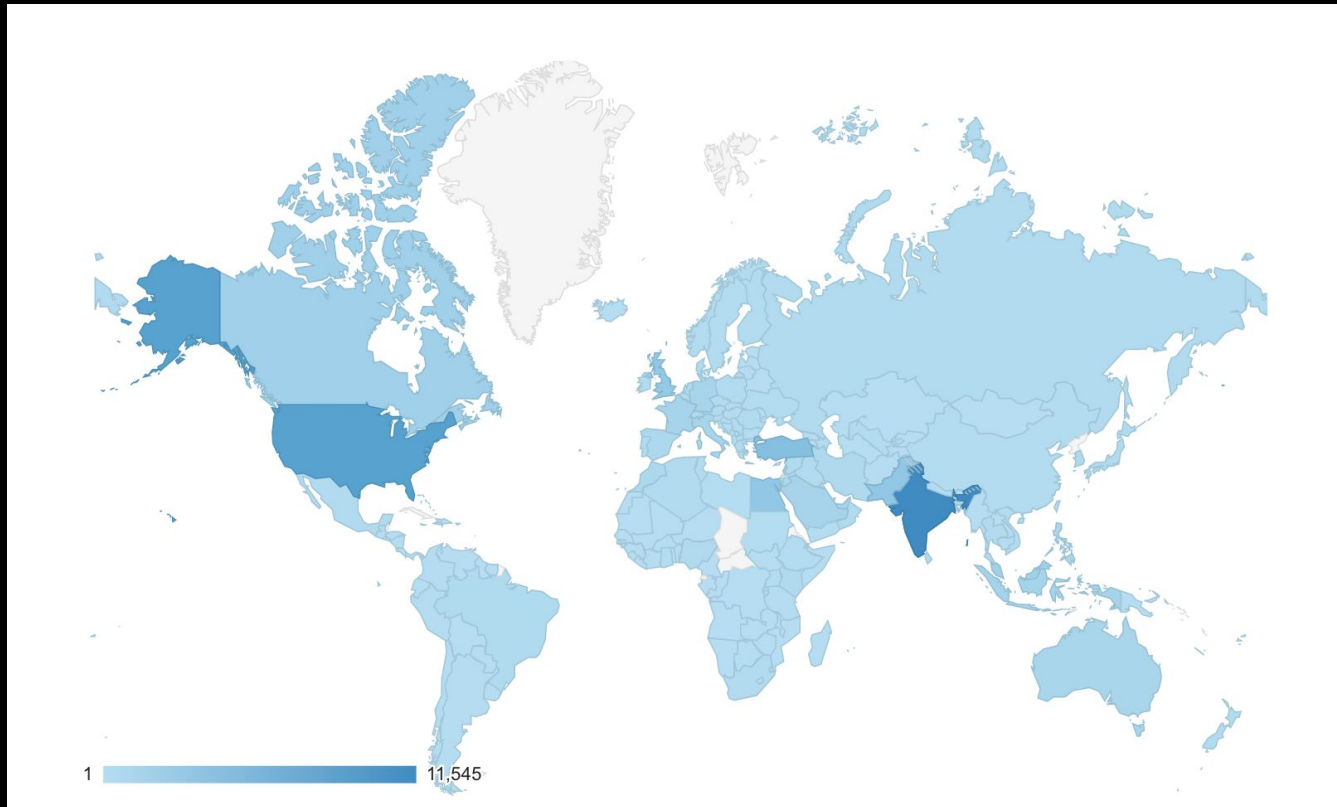
Published records (as of May 18, 2021)

- 8,510 Sites
- 9,561 Publications or Files (PDF, CAD, etc.)
- 1,115 Authorities (persons, companies, cities)
- 124,835 Images
- 594 Media (video and audio)
- Files in 22 languages
 - 7848 in English
 - 1585 in Arabic

(By default, the collections page shows all major collections in random order. Clicking the category shows an alphabetized list for that category only.)

Archnet is

- The largest freely accessible library of its kind
- Visited by users from virtually every country or territory in the world on a monthly basis



So why rebuild?

Why rebuild?

- Address a technology deficit. Some of backend software was reaching End of Life
- Database and its associated assets had become too large to be delivered efficiently by the current configuration of backend software and hosting servers
- Upgrades and changes to the design were becoming increasingly costly and time-consuming, due to factors above
- Most importantly....

ACCESSIBILITY

- Closer, if not total, compliance with W3C Accessibility Guidelines
- Friendlier to slower connections
- Friendlier to mobile devices
- Friendlier to users for whom English is not a first language

ARCHNET

30 CATALOGING INTERFACE COMPLETE

Except for

- Minor tweaks
- Aesthetic adjustments

ARCHNET

Librarian

Sites

Documents

Images & Videos

Donations

Donors

Authorities

Collections

CMS

Users

Home

Backgrounds

Featured Collections

Syllabi

Awards

Cities

Pages

Collection Types

Style Periods

Event Timelines

Logout

Details Geography Media Documents Collections Authorities Sites Technical

Site Names

+ Add

Qualify	Name	Primary	Actions
	0-14 Tower	<input checked="" type="checkbox"/>	Edit Copy Remove

Associated Names

+ Add

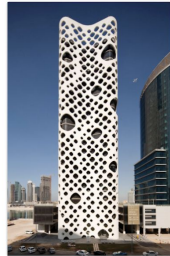
Agent ID	Agent name	Agent role	Actions
AN03143	Reiser + Umemoto	architect/planner	Edit Copy Remove
AN100819	Abu Qir		Edit Copy Remove

Description

Word count: 116

H1 H2 Sans Serif Normal B I U [Link](#)

This 22- storey high-rise for offices and retail in Business Bay is unique in its use of a free-standing concrete and rebar exoskeleton shell. Perforated with more than 1,300 random, approximately oval openings ranging in size from 1.25 to 7.5 metres, the lace or lattice-work patterned facade stands in contrast to the glass and steel curtain-walled skyscrapers typically encountered in the vicinity. Nestled within the curvaceous cruciform-shaped shell and anchored by concrete connectors is an inner glass-walled enclosure. At a distance of three feet from



0-14 Tower
Dubai, United Arab Emirates
AS09973

Historic Cities Programme

Aga Khan Award winner

Flag for review

[Save](#) [Cancel](#)

ARCHNET

Librarian

Sites

Documents

Images & Videos

Donations

Donors

Authorities

Collections

CMS

Users

Home

Backgrounds

Featured Collections

Syllabi

Awards

Cities

Pages

Collection Types

Style Periods

Event Timelines

Logout

+ Add Upload media

Name

IAA128292
Unpublished Type 35 mm B & W negative Khulafa Central Mosque Baghdad, Iraq
[Edit](#) [Copy](#) [Remove](#)


IAA128286
Unpublished Type 35 mm B & W negative Khulafa Central Mosque Baghdad, Iraq
[Edit](#) [Copy](#) [Remove](#)


IAA109432
Published Type drawing Duomo di Monreale Monreale, Italy
0-14 Tower Dubai, United Arab Emirates Henry Gally Knight
[Edit](#) [Copy](#) [Remove](#)

IAA109424
Published Roman Temple Yasser Tab...
[Edit](#) [Copy](#) [Remove](#)

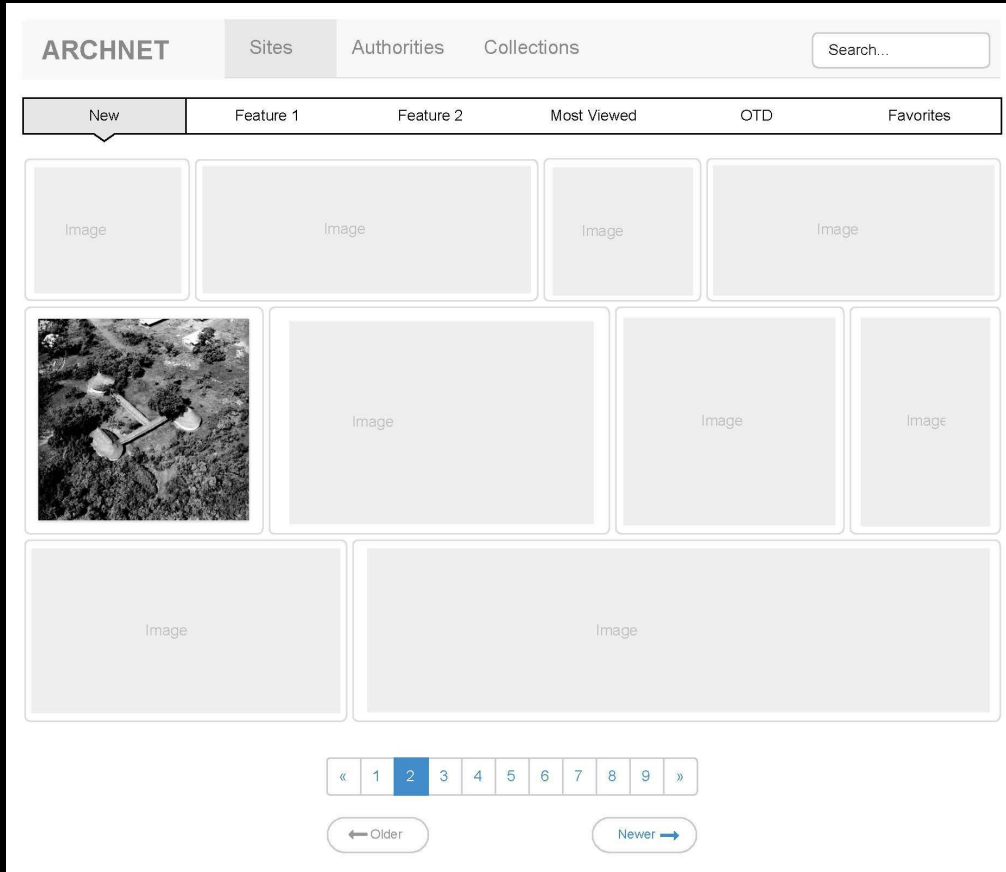
Upload Media

Add files or drop files here


Name *
logo_mes_1_5.jpeg
Media type *
Clear
Caption *
Logo for Middle Eastern Studies Program at Wellesley College
[Remove](#)


Name *
Al-Musharaka Logo2.jpg
Media type *
drawing
Clear
Caption *
Logo for the NITLE Al-Musharaka Initiative
[Remove](#)

[Save](#) [Cancel](#)



ARCHNET

30 ENHANCEMENTS (in no particular order)

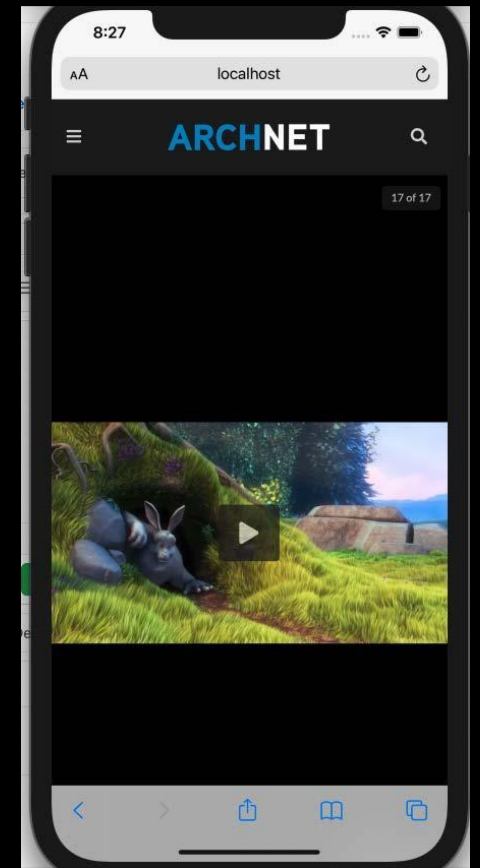
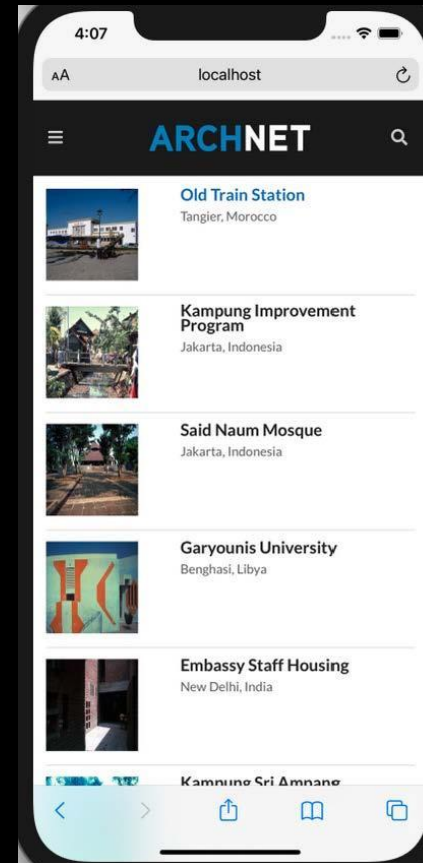
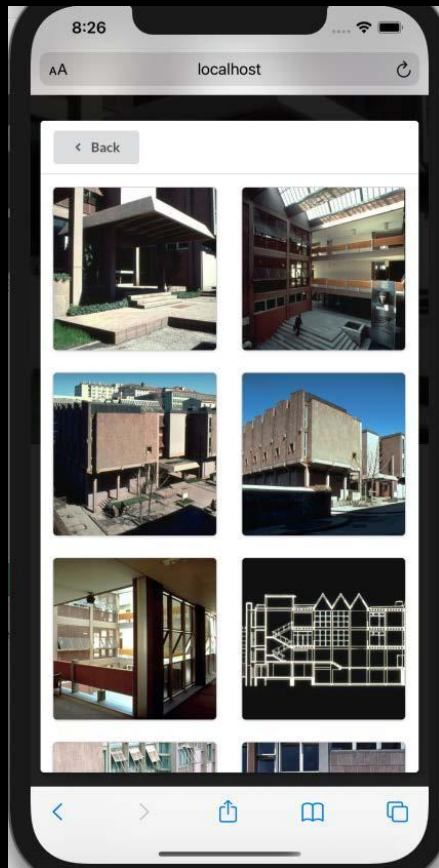
- Brings the platform up to date with latest technology
 - No significant changes to data structure
 - Significant changes to navigation, largely in response to user feedback



ARCHNET

3.0 ENHANCEMENTS (in no particular order)

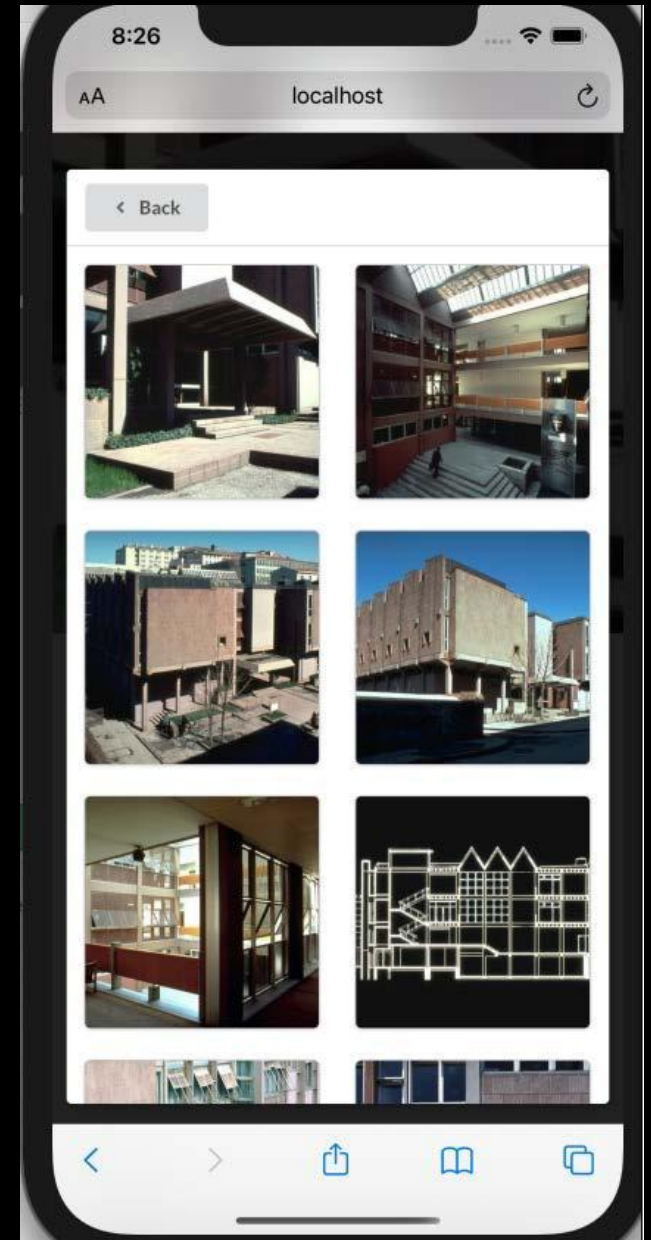
- Mobile first development



ARCHNET

3.0 ENHANCEMENTS (in no particular order)

- Faster response time
 - Less wait time
 - Fewer failed searches
 - Responsive even on slower connections
 - Important, because our largest user groups are in places with poor connections
- Easier to navigate, easier to search
- Multilingual search
- Mobile-friendly (location-based capabilities may launch with 3.0 or in 3.x)
- Closer compliance with WC



ARCHNET

3.0 SCHEDULE

- **This summer-Soft Launch.** Testers needed!
- Two months during which both sites will be live, but new content added only to the new platform.
- 3.0 Live by the start of the academic year!
- No significant interruption in cataloging or content development!



Future Developments (Development of Phase 2 and beyond)

- Integration of APIs and capacity for Machine to Machine interaction
 - Vocabularies of existing authorities: Library of Congress, Getty Institute, VIAF, etc.
- A number of enhancements to the interface, including the possibility of multi-lingual interfaces, integration of authorities in other languages
- Automation of processes like image standardization, captioning of videos, etc.
- Various tools to facilitate cataloging with less training
- Enhanced ability to display 3D models, virtual reality representations, etc.
- Etc.

ARCHNET

3.0 HELP NEEDED!

- Sign up to be a Archnet 3.0 tester: <https://akdc-mit.typeform.com/to/geLYpu6f>
- Share syllabi or other teaching material for our Pedagogy Collection: archnet-submission@mit.edu
- Propose an exhibition of content development project: archnet-submission@mit.edu
 - NOTE: Exclusive permissions are **NOT** required for Archnet. Contributors can donate their material to AKDC, but they can also simply grant a content sharing agreement.
- Request an Archnet workshop for your class (online or in-person): archnet@mit.edu